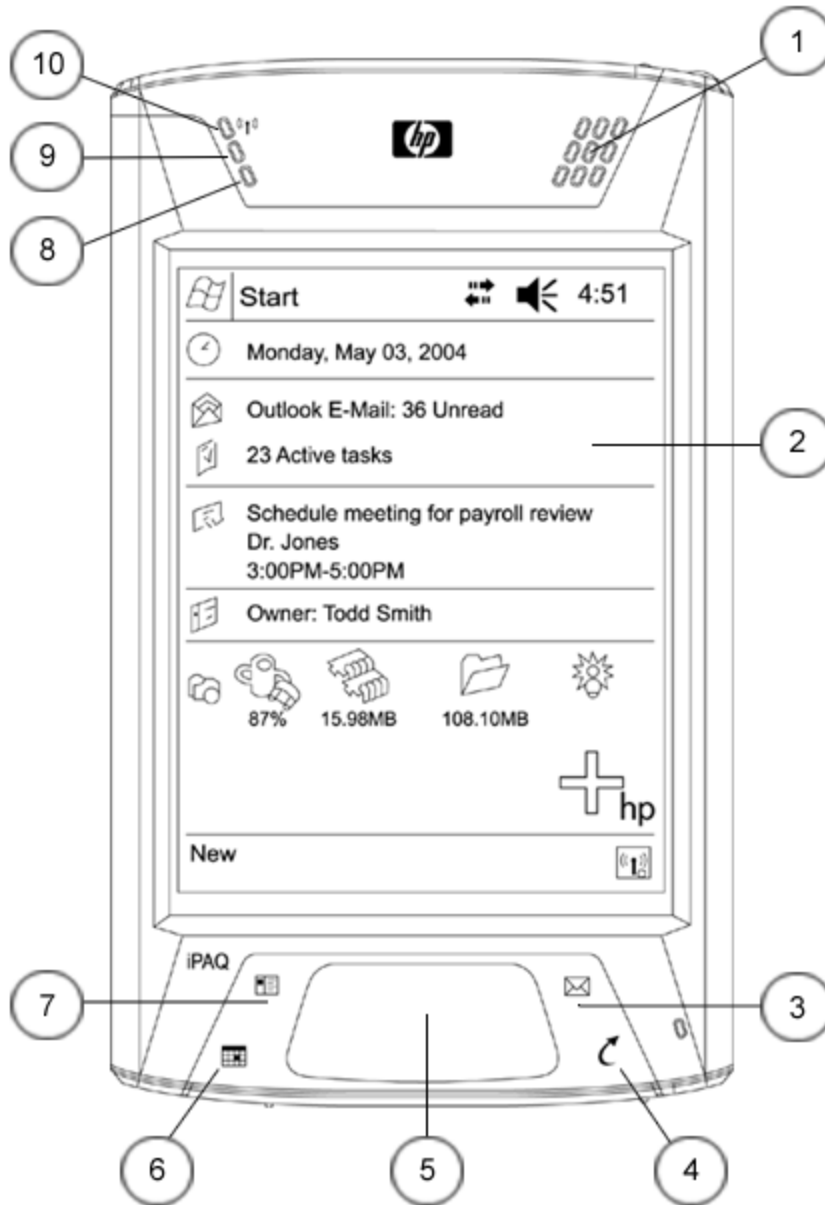


## Overview

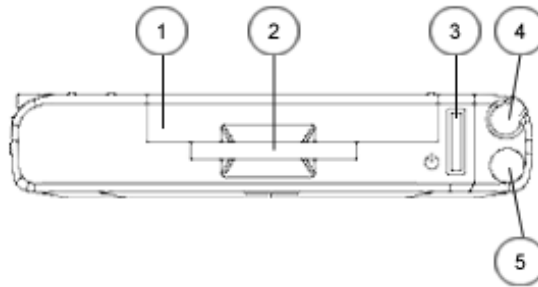


- 1. Speaker
- 2. Color Display
- 3. Inbox Button
- 4. iTask Button
- 5. Touchpad

- 6. Calendar Button
- 7. Contacts Button
- 8. Light Sensor
- 9. Charging/Notifications LED
- 10. Wireless LED

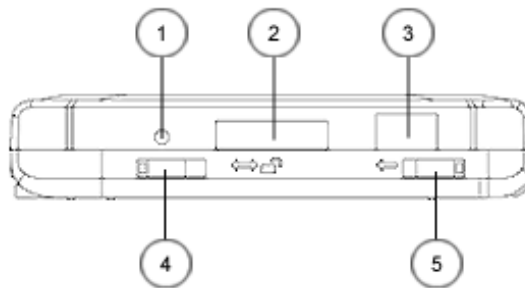
### Overview

Top View



1. Compact Flash (CF) Expansion Slot
2. Secure Digital (SD) Expansion Slot
3. Power Button
4. Stylus
5. Headphone Jack

Bottom View



1. Reset Button
2. Activesync Connector
3. Fast Infrared Transmitter/Receiver
4. Battery Door Lock
5. Battery Door Release

### At A Glance

- Stunning 4" Transflective VGA TFT color display, Landscape and Portrait display modes
- Intel® PXA270 Processor 624 MHz
- Integrated touchpad navigation with mouse-like cursor
- Integrated WiFi (WLAN 802.11b<sup>1</sup>)
- Integrated Bluetooth®<sup>1</sup> wireless technology
- Integrated IrDA FIR (fast infrared)
- HP ProtectTools security application
- Pre-installed Pocket Informant 5.0 personal information management (PIM) application
- Integrated SDIO and CF Type II expansion slots
- Magnesium-alloy body for additional durability
- Microsoft® Windows Mobile™ 2003 Second Edition software for Pocket PC (Premium Edition)
- Removable/rechargeable 1800 mAh Lithium-Ion battery
- Pocket versions of familiar applications like Microsoft® Outlook®, Word and Excel

**NOTE 1:** A standard WLAN infrastructure, other Bluetooth-enabled devices, separately purchased equipment, and a service contract with a wireless airtime provider may be required for applicable wireless communication. Wireless Internet use requires a separately purchased service contract. Check with service provider for availability and coverage in your area.

### Standard Features

#### Models

HP iPAQ hx4705 Pocket PC – 128 MB ROM, 64 MB SDRAM, WLAN and Bluetooth

FA282A#ABA – US Commercial, English

---

|                  |                                                                                      |
|------------------|--------------------------------------------------------------------------------------|
| <b>Processor</b> | Intel® PXA270 Processor 624 MHz                                                      |
|                  | <b>NOTE:</b> Intel's processor numbering is not a measurement of higher performance. |

---

|               |                              |                                                                                                                                       |
|---------------|------------------------------|---------------------------------------------------------------------------------------------------------------------------------------|
| <b>Memory</b> | <b>User Available Memory</b> | 192 MB total memory; (128 MB Strata Flash ROM and 64 MB SDRAM)<br>Up to 135 MB user available memory (includes 80 MB iPAQ File Store) |
|---------------|------------------------------|---------------------------------------------------------------------------------------------------------------------------------------|

---

|                |                            |                                                                         |
|----------------|----------------------------|-------------------------------------------------------------------------|
| <b>Display</b> | <b>Type</b>                | 4" Transflective type VGA TFT color; LED backlight with power save mode |
|                | <b>Modes</b>               | Portrait and Landscape                                                  |
|                | <b>Number of Colors</b>    | 64K color (65,536 colors)                                               |
|                | <b>Touch Screen</b>        | Yes                                                                     |
|                | <b>Resolution (W x H)</b>  | 480 x 640 pixels                                                        |
|                | <b>Dot Pitch</b>           | 0.126 mm x 0.126 mm                                                     |
|                | <b>Viewable Image Size</b> | 4.0 in (101.6 mm)                                                       |

---

|                                       |                                                                                                                                                                                        |  |
|---------------------------------------|----------------------------------------------------------------------------------------------------------------------------------------------------------------------------------------|--|
| <b>Hardware Buttons/Reset Buttons</b> | One power button, one Voice Record button, one Soft Reset button, Contacts button, Inbox button, Mail button and iTask button. (All buttons are programmable except for Reset button). |  |
|---------------------------------------|----------------------------------------------------------------------------------------------------------------------------------------------------------------------------------------|--|

---

|               |                           |  |
|---------------|---------------------------|--|
| <b>Stylus</b> | One – Included in the box |  |
|---------------|---------------------------|--|

---

|              |                                                                                                                          |  |
|--------------|--------------------------------------------------------------------------------------------------------------------------|--|
| <b>Audio</b> | Integrated microphone, speaker and one 3.5 mm stereo headphone/headset jack, MP3 stereo (through audio jack and speaker) |  |
|--------------|--------------------------------------------------------------------------------------------------------------------------|--|

---

|                   |                             |                                                                                                                           |
|-------------------|-----------------------------|---------------------------------------------------------------------------------------------------------------------------|
| <b>Indicators</b> | <b>Power Button</b>         | Charging and Notification indicators<br>Blinking green – notify<br>Blinking amber – charging<br>Solid amber – full charge |
|                   | <b>LED – Bluetooth/WLAN</b> | Solid blue LED – wireless radio(s) ON                                                                                     |

---

|                          |                                                             |                            |
|--------------------------|-------------------------------------------------------------|----------------------------|
| <b>Cradle Interfaces</b> | <b>Connector</b>                                            | 1 – 22 pin USB 2.0 Client  |
|                          | <b>Cable</b>                                                | 1 USB cable connects to PC |
|                          | <b>DC Power jack connector for AC/DC Adapter connection</b> | 1 (may vary by model)      |

---

|                         |                       |                                                                                       |
|-------------------------|-----------------------|---------------------------------------------------------------------------------------|
| <b>Other interfaces</b> | <b>IrDa</b>           | SIR and FIR Supported                                                                 |
|                         | <b>USB 2.0 Client</b> | Supported via HP standard 22 pin cradle interface                                     |
|                         | <b>Serial</b>         | Supported via HP standard 22 pin cable interface (cable must be purchased separately) |

---

|                |                                                          |  |
|----------------|----------------------------------------------------------|--|
| <b>SD Slot</b> | Support 1-bit and 4-bit SD/SDIO/MMC type memory standard |  |
|----------------|----------------------------------------------------------|--|

---

### Standard Features

CF Slot 1 Type II

---

**Power Supply**

**Battery** Removable/Rechargeable 1800 mAh Lithium-Ion user swappable battery. Optional extended removable/rechargeable 3600 mAh Lithium-Ion battery available for purchase (<http://www.hpshopping.com/ipaqaccessories>)

**AC Power** AC Input: 100~240 Vac, 50/60 Hz, AC Input current: 0.3 A max  
Output Voltage: 5Vdc (typical), Output Current: 2A (typical)

**NOTE:** Battery run time varies based on the usage pattern of an individual user and the configuration of the handheld. Use of internal wireless capabilities and backlight will significantly decrease battery run time.

---

**AC Adapter**

**Dimensions (H x W x D)** 3 x 1.9 x 1.8 in (76 x 48 x 44 mm - including prongs), (may vary by model)

**Cord Length (approx.)** 6 ft (1.83 m)

**Power Supply Ratings**

|                        |                        |
|------------------------|------------------------|
| <b>Voltage Range</b>   | 100 to 240 V Switching |
| <b>Input Current</b>   | 0.3 Aac                |
| <b>Input Frequency</b> | 50 to 60 Hz            |
| <b>Output Voltage</b>  | 5 VDC                  |
| <b>Output Current</b>  | 2 Amp                  |

---

**System Unit**

**Dimensions (H x W x D)** 5.17 x 3.03 x .59 in (131 x 77 x 14.9mm)

**Body** Magnesium-alloy

**Weight** 186.7g (6.6oz) (w/o cover & cards)

**Operating Temperature** 32° to 104° F (0° to 40° C)

**Storage Temperature** -4° to 140° F (-20° to 60° C)

**Operating Humidity** 90% RH

**Regulatory Marks** Electrical FCC Class B, UL or CSA NRTL

---

**Design Features** 4 shortcut programmable buttons, Navigation Touch-pad, Touch-sensitive display for stylus or fingertip, Voice record button, Microphone and Speaker on front-side of unit

---

**Operating System** Microsoft® Windows Mobile™ 2003 Second Edition software for Pocket PC (Premium Edition)  
Pocket versions of Microsoft software are included (Outlook, Word, Excel and Internet Explorer for Pocket PC)

---

**Operating System Applications** Powered by Microsoft® Windows Mobile™ 2003 Second Edition software for Pocket PC (Premium Edition) Calendar, Contacts, Tasks, Voice Recorder, Notes, Pocket Word (with Spellchecker), Pocket Excel, Pocket Internet Explorer, Windows Media Player 9 (MP3, audio and video streaming), Calculator, Solitaire, Jawbreaker, Inbox (with Spell Checker for email), File Explorer, Pictures, Terminal Services Client, VPN Client, Infrared Beaming, Clock, Align Screen, Memory, Volume control, ClearType Tuner (except for Asian languages)

---

**In the box** HP iPAQ hx4700 Pocket PC, AC adapter, USB Desktop Synchronization Cradle, Plastic Flip Cover, Stylus, Getting Started Guide, and HP iPAQ Pocket PC Companion CD.

### Standard Features

#### Additional Software and links

Bluetooth Phone Manager  
Clearvue Suite (PowerPoint and PDF)  
HP ProtectTools powered by Credant  
Microsoft ActiveSync 3.7.1 (Desktop device synchronization)  
Microsoft Reader eBooks  
Outlook 2002  
Personal Dockware  
Pocket Informant 5  
Pocket Panel Lite  
Links to Microsoft websites for additional downloadable applications (some programs may require purchase of additional desktop software to utilize Pocket PC versions)

#### HP Exclusive Applications

Bluetooth Manager  
HP Mobile Printing: print to network and Bluetooth printers without any additional software.  
HP ProtectTools powered by Credant  
iTask Task Switcher  
iPAQ Wireless: utility to manage wireless connections  
iPAQ File Store: non-volatile storage in flash ROM  
iPAQ Backup: utility for Backup/Restore to Main Memory, Memory Card or iPAQ File Store  
HP Image Zone for Pocket PC: application to view and print pictures and create slide shows  
Utilities: Self Test, iPAQ Audio, Power Status

#### Companion CD from HP

##### APPLICATIONS

###### Full Versions

Active Sync  
Adobe PDF Viewer for Pocket PC  
Adobe Reader for PC  
Afaris Management  
Altiris Express  
Flash Player for Pocket PC  
Outlook 2002 Desktop  
Worldmate (FA282A#ABA models only)

###### CD LINKS

AvantGo  
Call Manager  
ClearVUE Suite (Word and Excel)  
Handango  
iPAQ backup upgrade  
Media Player Desktop  
Microsoft Games  
SoftPhone  
VTGo  
Additional Documentation  
Safety and Comfort Guide on PDF, and User Guide on PDF

**NOTE:** Programs may vary based on model. Some programs are accessed through CD links to download web sites.

###### Trial Versions

Audible Player  
Cadenza (Lotus Notes client)  
File Explorer 2003  
ListPro  
Presenter-to-go  
Vindigo 2.0

#### Service and Support

One-year parts and labor in most regions; 90 days technical support for software in most regions. Additional offers may vary by region.

### Standard Features

|                                                        |  |                                                                                                                                                                                                                                     |
|--------------------------------------------------------|--|-------------------------------------------------------------------------------------------------------------------------------------------------------------------------------------------------------------------------------------|
| <b>WLAN Specifications<sup>1,2</sup></b>               |  |                                                                                                                                                                                                                                     |
| <b>Technology</b>                                      |  | High-speed wireless access to the Internet, email and corporate data                                                                                                                                                                |
| <b>RF Network Standard</b>                             |  | IEEE 802 Part 11b (802.11b)                                                                                                                                                                                                         |
| <b>Frequency Band</b>                                  |  | 2,4000 to 2.4835 GHz<br>2,4465 to 2.4835 GHz (France)<br>2,4000 to 2,497 GHz (Japan)                                                                                                                                                |
| <b>Antenna type</b>                                    |  | Embedded Antenna                                                                                                                                                                                                                    |
| <b>Security</b>                                        |  | WEP 64/128-bit compliant to IEEE 802.11<br>Compliant to 802.1X (EAP-TLS, PEAP)<br>LEAP, WPA                                                                                                                                         |
| <b>Network Architecture Models</b>                     |  | Ad-hoc (Peer to Peer)<br>Infrastructure (Access Points Required)                                                                                                                                                                    |
| <b>Modulation Technique</b>                            |  | Direct Sequence Spread Spectrum                                                                                                                                                                                                     |
| <b>Modulation Schemes</b>                              |  | DBPSK, DQPSK, CCK                                                                                                                                                                                                                   |
| <b>Receiver Sensitivity - Packet Error Rate (8E-2)</b> |  | 11 Mbps: < -80 dBm<br>5.5 Mbps: < -82 dBm<br>2 Mbps: < -86 dBm<br>1 Mbps: < -89 dBm                                                                                                                                                 |
| <b>Maximum Receive Level</b>                           |  | -10dBm (1/2/5.5/11 Mbps)                                                                                                                                                                                                            |
| <b>Output Power (approximately)</b>                    |  | 15 dBm                                                                                                                                                                                                                              |
| <b>Power Management</b>                                |  | Radio On/Off control through Microsoft Connection icon<br>Power Save mode available in Power Settings                                                                                                                               |
| <b>Power Consumption</b>                               |  | Transfer mode: < 300 mA, average<br>Receive mode: < 200 mA, average                                                                                                                                                                 |
| <b>Power Saving Option</b>                             |  | 802.11 Compliant Power Saving                                                                                                                                                                                                       |
| <b>Media Access Protocol</b>                           |  | CSMA/CA (Collision Avoidance) with ACK                                                                                                                                                                                              |
| <b>Protocols Supported</b>                             |  | TCP/IP<br>IPX/SPX<br>UDP                                                                                                                                                                                                            |
| <b>Operating Distance</b>                              |  | Typical 300 feet – Open sight                                                                                                                                                                                                       |
| <b>Certifications</b>                                  |  | All necessary regulatory approvals for countries we support including:<br>WECA Wi-Fi approval<br>FCC (47 CFR) Part 15C, Section 15.247&15.249<br>ETS 300 328, ETS 301 489-6<br>Low Voltage Directive IEC950<br>UL, CSA, and CE Mark |

#### NOTE:

<sup>1</sup> A standard WLAN infrastructure, other Bluetooth-enabled devices, and a service contract with a wireless airtime provider may be required for applicable wireless communication. Wireless Internet use requires a separately purchased service contract. Check with service provider for availability and coverage in your area. Not all web content available.

<sup>2</sup> Wireless access point required and is not included. Availability of public wireless access points limited. Wireless Internet use may require separately purchased Internet service contract.

### Standard Features

#### Bluetooth® Specifications<sup>1</sup>

|                                |                                                                                                                                                                                                                                                                                                                                                                                                                                                                                                                                                                                                                                                                                                                                                                                                                                                                                                                                                                                                                                                                                                                                                                                                                                                                                                                                                                                      |
|--------------------------------|--------------------------------------------------------------------------------------------------------------------------------------------------------------------------------------------------------------------------------------------------------------------------------------------------------------------------------------------------------------------------------------------------------------------------------------------------------------------------------------------------------------------------------------------------------------------------------------------------------------------------------------------------------------------------------------------------------------------------------------------------------------------------------------------------------------------------------------------------------------------------------------------------------------------------------------------------------------------------------------------------------------------------------------------------------------------------------------------------------------------------------------------------------------------------------------------------------------------------------------------------------------------------------------------------------------------------------------------------------------------------------------|
| <b>Technology</b>              | High-speed, low-power, short-range wireless communication with other Bluetooth devices                                                                                                                                                                                                                                                                                                                                                                                                                                                                                                                                                                                                                                                                                                                                                                                                                                                                                                                                                                                                                                                                                                                                                                                                                                                                                               |
| <b>Bluetooth specification</b> | 1.2 compliant (2.4-GHz Industrial Scientific Medical Band)                                                                                                                                                                                                                                                                                                                                                                                                                                                                                                                                                                                                                                                                                                                                                                                                                                                                                                                                                                                                                                                                                                                                                                                                                                                                                                                           |
| <b>System interface</b>        | High-speed UART processor interface                                                                                                                                                                                                                                                                                                                                                                                                                                                                                                                                                                                                                                                                                                                                                                                                                                                                                                                                                                                                                                                                                                                                                                                                                                                                                                                                                  |
| <b>User Interface</b>          | Bluetooth Manager                                                                                                                                                                                                                                                                                                                                                                                                                                                                                                                                                                                                                                                                                                                                                                                                                                                                                                                                                                                                                                                                                                                                                                                                                                                                                                                                                                    |
| <b>Device type</b>             | Class II device; up to 4 dBm transmit, typical 10 meter range                                                                                                                                                                                                                                                                                                                                                                                                                                                                                                                                                                                                                                                                                                                                                                                                                                                                                                                                                                                                                                                                                                                                                                                                                                                                                                                        |
| <b>Power</b>                   | 3.3V ±5% Peak current <ul style="list-style-type: none"><li>● typical TX current at approximately 30 mA</li><li>● typical RX current at approximately 50 mA</li></ul>                                                                                                                                                                                                                                                                                                                                                                                                                                                                                                                                                                                                                                                                                                                                                                                                                                                                                                                                                                                                                                                                                                                                                                                                                |
| <b>Receiver sensitivity</b>    | -83 dBm                                                                                                                                                                                                                                                                                                                                                                                                                                                                                                                                                                                                                                                                                                                                                                                                                                                                                                                                                                                                                                                                                                                                                                                                                                                                                                                                                                              |
| <b>Regulatory standards</b>    | R&TT#-EN 300 328 and EN 300 826, UL 1950, CB Safety Scheme inclusive of EN 60950 and IEC 950, FCC Part 15 subpart C, Canadian, CE                                                                                                                                                                                                                                                                                                                                                                                                                                                                                                                                                                                                                                                                                                                                                                                                                                                                                                                                                                                                                                                                                                                                                                                                                                                    |
| <b>Profile Support</b>         | General Access Profile<br>Service Discovery Application Profile<br>Serial Port Profile<br>Generic Object Exchange Profile<br>File Transfer Profile<br>Dial-Up Networking Profile<br>LAN Access Profile<br>Object Push Profile<br>Personal Area Networking Profile<br>Basic Printing Profile<br>Hard Copy Replacement Profile (printing)<br>Headset Profile<br>Human Interface Device Profile (HID)<br>Hands Free Profile (HF)                                                                                                                                                                                                                                                                                                                                                                                                                                                                                                                                                                                                                                                                                                                                                                                                                                                                                                                                                        |
| <b>Usage Models</b>            | <b>Service Discovery</b><br>Determine what Bluetooth devices are within range and support authorization<br><b>File Transfer</b><br>File and directory browsing and navigation on another Bluetooth device.<br>File copying<br>Object manipulation – including add, delete, create new folders etc.<br><b>Serial Port</b><br>Synchronization between PDAs and PCs<br><b>Dial Up Networking</b><br>Wireless link to WAN thru Bluetooth enabled cell phone <sup>1</sup><br>Agnostic to WAN technology<br>Send/receive SMS messages<br><b>LAN Access</b><br>Wireless link to Corporate LAN using Bluetooth and appropriate Bluetooth access point <sup>1</sup><br>Corporate email, network neighborhood, access to LAN applications, file transfer, ftp, Internet browsing, etc, using TCP/IP <sup>1</sup><br>Access the Internet by connecting to your desktop or notebook over Bluetooth and using its network connection <sup>1</sup><br><b>Generic Object Exchange and Object Push</b><br>Exchange business cards, tasks, documents, appointments and more <sup>1</sup><br><b>Personal Area Networking</b><br>Collaborate, chat, play games, exchange data <sup>1</sup><br>Adhoc peer to peer networking <sup>1</sup><br><b>Basic Printing and Hard Copy Replacement Profiles</b><br>Print to any HP Bluetooth enabled printer without the need for cables or specific print drivers |
| <b>Certifications</b>          | All necessary regulatory approvals for countries supported including:<br>Bluetooth logo (FCC (47 CFR) Part 15C, Section 15.247&15.249 ETS 300 328, ETS 301 489-1/17 Low Voltage Directive IEC950 UL and CE Mark                                                                                                                                                                                                                                                                                                                                                                                                                                                                                                                                                                                                                                                                                                                                                                                                                                                                                                                                                                                                                                                                                                                                                                      |

**NOTE:** <sup>1</sup> A standard Bluetooth wireless infrastructure and/or other devices enabled with Bluetooth may be required for applicable wireless communication.

### Options

**NOTE:** Optional accessories are available at additional cost see <http://www.hpshopping.com/ipaqaccessories> for details.

|                        |                                                                                                            |            |
|------------------------|------------------------------------------------------------------------------------------------------------|------------|
| <b>Memory/Storage</b>  | 128 MB SD Memory Card                                                                                      | FA135A#AC3 |
|                        | 256 MB SD Memory Card                                                                                      | FA136A#AC3 |
|                        | 512 MB SD Memory Card                                                                                      | FA184A#AC3 |
|                        | 1 GB SD Memory Card                                                                                        | FA283A#AC3 |
| <hr/>                  |                                                                                                            |            |
| <b>Power</b>           | 1800 mAh Lithium Ion Battery                                                                               | FA257A#AC3 |
|                        | 3600 mAh Lithium Ion Extended Battery                                                                      | FA258A#AC3 |
|                        | Automobile Adapter                                                                                         | FA125A#AC3 |
|                        | Charger Adapter                                                                                            | FA133A#AC3 |
|                        | AC Adapter                                                                                                 | FA130A#ABA |
| <hr/>                  |                                                                                                            |            |
| <b>Synchronization</b> | Desktop Cradle                                                                                             | FA260A#AC3 |
|                        | AutoSync Cable (USB and Serial)                                                                            | FA122A#AC3 |
| <hr/>                  |                                                                                                            |            |
| <b>Other</b>           | Stylus Three-pack                                                                                          | FA261A#AC3 |
|                        | Foldable Keyboard                                                                                          | FA118A#ABA |
|                        | Thumb keyboard                                                                                             | FA302A#AC3 |
| <hr/>                  |                                                                                                            |            |
| <b>Performance</b>     | SDIO Camera (Photosmart Mobile Camera)                                                                     | FA185A#ABA |
|                        | iPAQ Navigation System – (U.S. & Canada only)                                                              | FA196A#ABA |
| <hr/>                  |                                                                                                            |            |
| <b>Cases</b>           | Rugged case                                                                                                | FA288A#AC3 |
|                        | Custom Cases: to view and order go to: <a href="http://www.casesonline.com">http://www.casesonline.com</a> |            |



## HP iPAQ Pocket PC is a Microsoft® Windows® Powered Pocket PC

For more information on HP iPAQ Pocket PC, visit our website at <http://www.hp.com/go/iPAQ>.

© Copyright 2004 Hewlett-Packard Development Company, L.P. The information contained herein is subject to change without notice. The only warranties for HP products and services are set forth in the express warranty statements accompanying such products and services. Nothing herein should be construed as constituting an additional warranty. HP shall not be liable for technical or editorial errors or omissions contained herein. Microsoft, Windows, the Windows Logo and ActiveSync are registered trademarks or trademarks of Microsoft Corporation in the United States and/or other countries. Intel is a registered trademark of Intel Corporation in the U.S. and/or other countries.